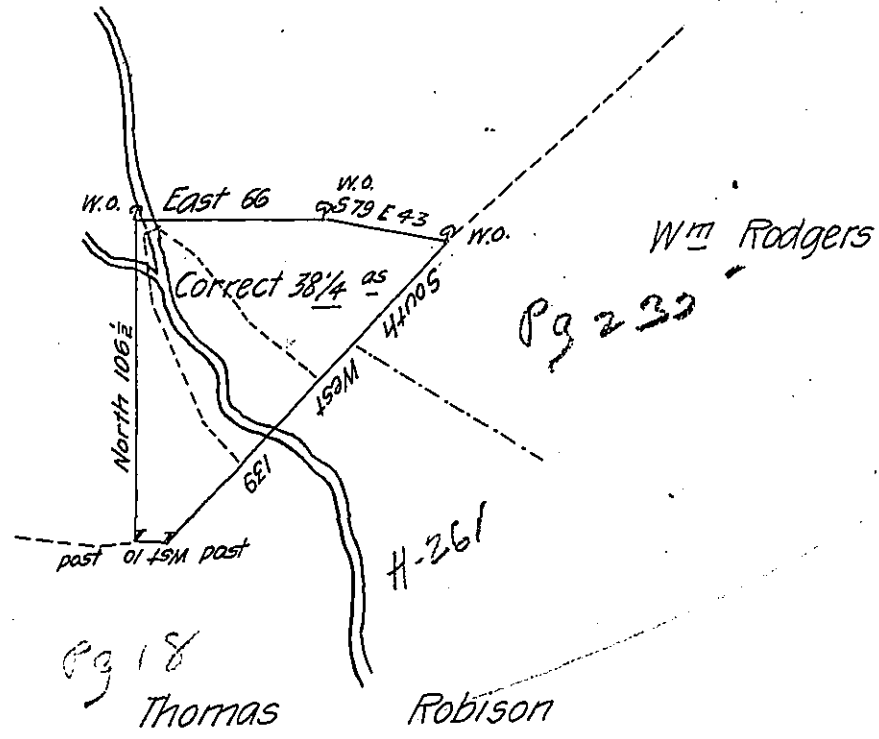


Alex

Mcklehanney



Wm Rodgers

Pg 18

Thomas

Robison

A Draught of Thomas Robisons Land Situate in Hanover Township
 and County of Lancaster Containing thirty eight acres with an allowance of
Six P. Ct. Surveyed P-me

Wm Galbreath De. S.

To Nicholas Scull ^{Esq}
Surveyor Generall

IN TESTIMONY that the above is a copy of the original remaining on file in
 the Department of Internal Affairs of Pennsylvania, made
 conformably to an Act of Assembly approved the 16th day of
 February, 1833, I have hereunto set my Hand and caused
 the Seal of said Department to be affixed at Harrisburg,
 this thirty first day of July 1906

Isaac D. Brown
 Secretary of Internal Affairs.